
IMPORTANT !

From version v4.3 of the 7300 software it is important to set the following RS232 communication parameters in the Gas-Monitoring instrument (1302, 1312, 1314 or 1412), before using the 7300 software.

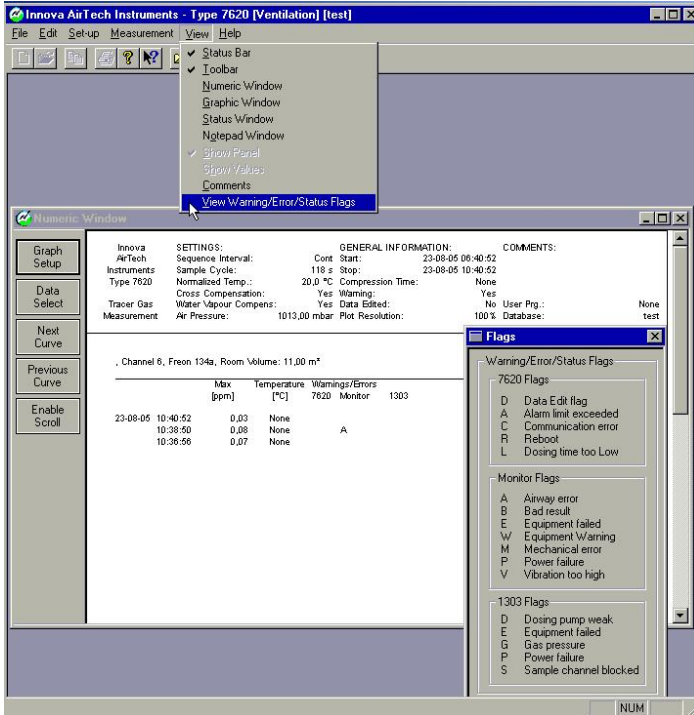
The needed settings for the Gas-Monitoring instrument are:

Baud Rate	9600
Stop Bits	1
Data Bits	7
Parity	Even
Hardwire Mode	Switched-Line
Handshake Type	Hard-Wired

Please refer to the Instruction Manual for the actual Gas-Monitoring instrument (1302, 1312, 1314 or 1412) for details how to set the RS232 communication parameters.

Addendum to chapter 5, section 5.2 Using the Numeric Data Window

A *Flags* window have been added in order to clarify the meaning of the displayed Warning/Errors flags, which is displayed in the numeric window:



Pulling down the **View** menu and clicking on **View Warning/Error/Status Flags** can display the *Flags* window.